



# CASE STUDY: ROAD BUILDING EQUIPMENT

## APPLICATION: COLD MILLING MACHINE

Road mills are intended to work non-stop prepping surfaces for paving, usually on projects with strict deadlines. Unscheduled breakdowns are costly in terms of performance penalties and costs of last minute repairs.

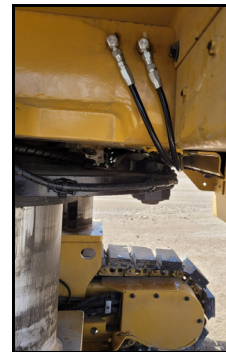
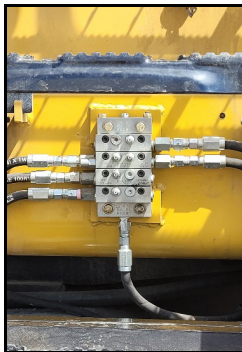
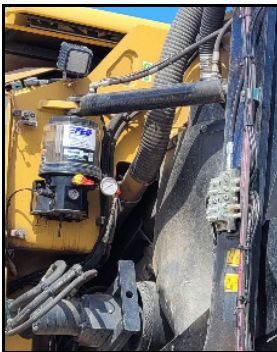


## THE FLO SOLUTION

The FLO system consists of a Lincoln Quicklub® 24 VDC Series 203 pump with an 8L grease reservoir, UV positive displacement grease metering valves, and fittings, tubing and hose with standard re-usable hydraulic hose ends and adapters.

### System Features:

- The system is controlled by the machine ignition switch, with no additional electrical, air or hydraulic hook-ups required, giving the installation long-term dependability.
- It includes an integrated timer with adjustable "Off" time up to 15 hours and "On" time of 2-30 minutes, for trouble-free operation and maximum flexibility to quickly adjust grease frequency to suit any location, environment or requirement.
- Points serviced by the system include: steer cylinder rod & barrel ends; tie rod; hopper; hopper gate; main & lower posts; track pivots; main conveyor; conveyor pivot; conveyor tilt cylinder rod & barrel ends; and conveyor bearing.
- Grease delivery to bearings is monitored by the visual cycle indicator pin (CIP) on the master UV grease metering valve. When the system cycles, the CIP shuttles back and forth, the wiper/paddle rotates in the reservoir and a pressure gauge shows operating pressure, allowing the operator to easily and quickly monitor system performance.
- Each valve assembly is supplied with a back-up remote, manual, high-pressure lubrication fitting servicing each point. In the unlikely event of a system shut-down due to a blocked line, the operator can quickly and easily trouble-shoot and identify the problem fitting and take immediate action. If the vehicle can't be taken out of operation for repair just then, the remaining valves can still be greased through the back-up grease fittings. Also, individual lines can be primed/flushed without having to disturb or remove any fittings. UV valves assemblies are modular in design, so servicing can be done quickly without having to disturb or remove any grease lines.
- An in-line high-pressure grease filter with a cleanable and re-usable filter screen protects against contamination.
- The FLO system is suitable for most off-the-shelf North American greases and will handle lubricants up to an NLGI #2 rating to -25 °C or -13 °F, eliminating the requirement for any "specialized" grease.



## FLO RESULTS

FLO's completely reliable autogreasing system dispenses small measured amounts of grease, frequently while the road mill operates, ensures consistent and safe lubrication of critical pins and bushings, avoiding breakdowns and keeping the machine out on the job meeting deadlines.

**For Total Lube Solutions,  
GO WITH THE FLO!**

**FLO Components Ltd.,** 50 Admiral Blvd., Mississauga, ON, L5T 2W1  
1.800.668.5458 • sales@flocomponents.com • www.flocomponents.com