



CASE STUDY: GARAGE FLUID SYSTEM

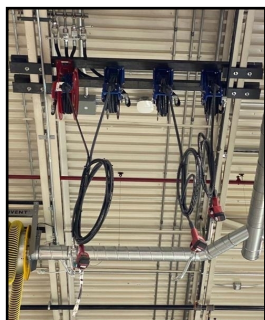
APPLICATION: LUBE DISPENSING & DISPOSAL SYSTEM

FLO's customer was a construction company building a mechanics' garage for a public utility. They needed to provide a fluid-handling system but had no experience in the design of these systems. Their requirements included: dispensing of grease from original refinery drums; bulk storage, dispensing and tracking of 3 types of lube oils throughout the garage; and a method for collecting and disposing of waste oil. FLO was a one-stop shop for the customer, taking their parameters and working with them to design and supply a complete fluid-handling turnkey solution.



THE FLO SOLUTION

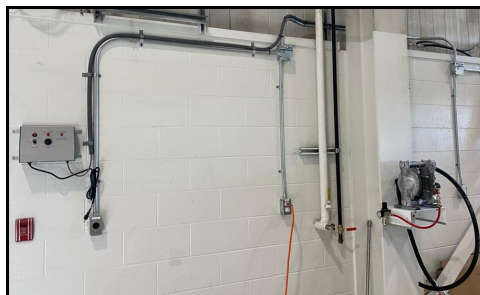
FLO's designed and installed system included quality equipment from Lincoln Industrial, Alemite Lubrication and Graco Lubrication Equipment, providing the components best suited to the application. The Grease Handling Package for the refinery drums included a 50:1 air-operated pump, complete with an air-operated follower plate assembly and pump lift. With this set-up, lifting the pump to change out the drum doesn't have to be done manually. This makes it easier to change drums, safer for workers, and reduces the potential for grease contamination.



The Bulk Lube Oil Storage Package included a steel tank for each oil, each with a 6:1 air-operated pump package with air regulator, filter, lubricator and gauge. The pumps are wall-mounted, with suction lines going into the tanks, so again, they don't have to be lifted out of the tanks. This also creates a cleaner installation and makes them easier to trouble-shoot if necessary as you can see the whole pump, unlike a tank mounted unit where you can't see what's happening down at the bottom of the pump. Each tank also has a level indicator and being double-walled, is vacuum monitored.

The Hose Reel Station included three "Lube" hose reels, each with 50' of medium pressure hose and one "Grease" hose reel with 50' of high pressure hose, along with steel mounting brackets to secure them to I-beams. Each heavy-duty "Lube" reel also included an electronic control metering valve.

The Waste Oil Transfer System was designed to be connected to roll-around drain carts used throughout the mechanic's shop. It included a wall-mounted, 1:1 air-operated double diaphragm pump package, and a steel, vacuum monitored, waste oil tank with electronic "overflow monitoring and shut-off".



FLO RESULTS

The customer originally expected to have to install two sets of hose reels. FLO looked at the requirements, the layout and size of the shop, and through our experience and working with the customer, were able to provide a solution using a single set of reels, that met their dispensing requirements, allowing them to dispense anywhere in the shop, while lowering their costs. The customer saves money by purchasing lubricants in bulk, has improved housekeeping and is able to accurately track fluid usage.

**For Total Lube Solutions,
GO WITH THE FLO!**

FLO Components Ltd., 50 Admiral Blvd., Mississauga, ON, L5T 2W1
1.800.668.5458 • sales@flocomponents.com • www.flocomponents.com