



## CASE STUDY: WINTER ROAD MAINTENANCE CONTRACTOR

### APPLICATION: TANDEM-AXLE PLOW TRUCK WITH SPREADER

Management knew that sand, salt and water would combine to create a very corrosive environment for their trucks. Unpredictable winter weather, long hours and parking the trucks at "ice camps", meant greasing wasn't getting done as well or as often as they would like. They already owned pavers and other equipment with Autogreasers installed and wanted the same level of protection for their plows.



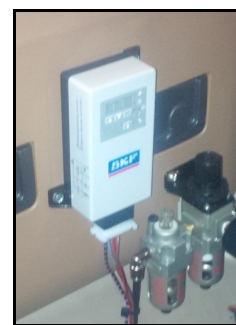
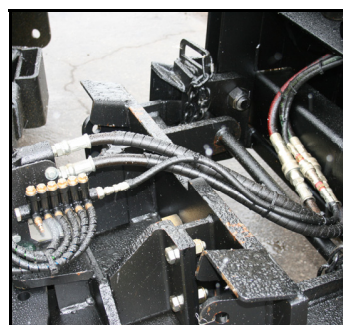
### THE FLO SOLUTION

FLO installed SKF MonoFlex Automatic Greasers - a single-line system, consisting of a gear pump with 2.7 Litre (6 lb.) reservoir, external control unit and parallel type piston distributors. The timer-controlled pump supplies fluid grease to the distributor blocks via the main line when the pump is in operation. At the end of the pump run-time, the pressure relief valve opens and the spring-loaded pistons in the distributors then discharge independently of each other, precisely measured amounts of lubricant from the metering chambers to the truck lubrication points: spring pins, steering linkages, king pins, slack adjusters, brake cams, tie rods, body hinge, cross shafts, conveyor, spinners, blade and wing.



Features of the FLO SKF MonoFlex Fluid Grease System:

- Handles any brand of fluid grease NLGI #000 to 00 that meets system specifications, down to -25 °C or -13 °F.
  - A totally electric 12/24 VDC pump eliminates the requirement to connect to the truck's air system, or any potential freezing of airlines due to condensation.
  - A pressure gauge allows for visual monitoring of system pressure during maintenance inspections and trouble-shooting.
- Feedlines are connected through manifold blocks with individual distributors that are easily adjusted by changing the screw-in volume caps, without having to disconnect any of the grease lines.
  - An electronic pump control unit with LED is installed separately in cab for easy visual inspection. It has an adjustable timer for system "OFF" and "ON" time, and microprocessor that stores all operating states after the power has been switched off. It has full monitoring capabilities, including low level and lube failure, and signals any malfunctions via an indicator light.



### FLO RESULTS

FLO's completely reliable autogreasing system dispenses small measured amounts of grease, frequently while the plow operates, maintaining a consistent grease seal to prevent water, salt and other contaminants from migrating into bearings. A constant flow of lubricant from inside the bearings outward, purges contaminants from the bearings. FLO's system helps keep our customer's trucks out on the job and making money.

**For Total Lube Solutions,  
GO WITH THE FLO!**

**FLO Components Ltd.,** 50 Admiral Blvd., Mississauga, ON, L5T 2W1  
1.800.668.5458 • sales@flocomponents.com • www.flocomponents.com