



# SWITCH PLATE LUBRICATION

## SUPER-LUBE® SWITCH PLATE OIL WITH PTFE

Super-Lube® Switch plate oil is a Synthetic non-metallic oil containing PTFE. Super-Lube® Switch plate oil can be applied by brushing, pouring, or spraying. With a continuous operating temperature of -45F to 450F, there is no need to stock seasonal viscosities.

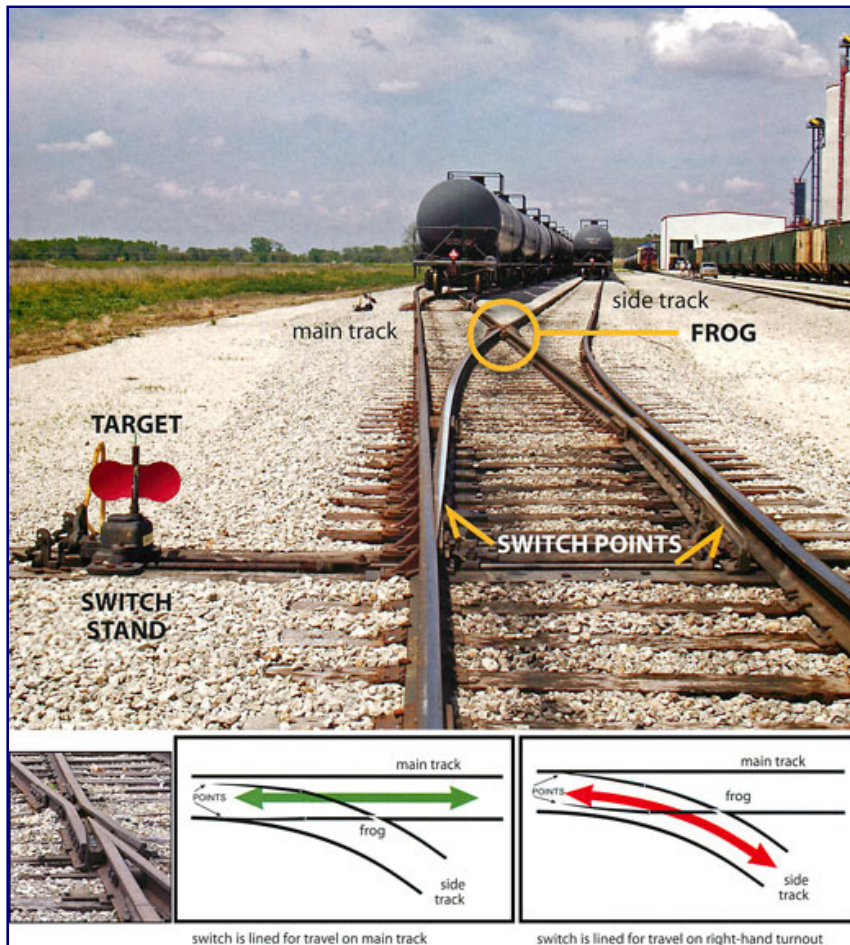
### KEY FEATURES:

- ✓ Reduces application time of Graphite by 80%.
- ✓ Less Electrical Draw, Contains PTFE polymers, Dielectric.
- ✓ Will not freeze or harden, -45F to 450F
- ✓ Excellent Lubricity, No solvent additives, No vapors, no VOC's
- ✓ Resists water, UV Breakdown, Will not attract dirt and dust.
- ✓ Environmentally Friendly, NSF Approved H1, Biodegradable, Non Toxic.



### Part Numbers:

47-58010	1 Gallon Container
47-58050	5 Gallon Pail
47-58055	55 Gallon Drum



**For Total Lube Solutions,  
GO WITH THE FLO!**

**FLO Components Ltd.,** 50 Admiral Blvd., Mississauga, ON, L5T 2W1  
1.800.668.5458 • sales@flocomponents.com • www.flocomponents.com



# TECHNICAL DATA SHEET

**SUPER-LUBE® RAILROAD SWITCH PLATE LUBRICANT  
WITH SYNCOLON® (PTFE)**

## PROPERTIES:

Test	Test Method	Rating
<b>Color</b>		Translucent white
<b>Temperature range</b>		-45°F to 450°F (-43°C to 232°C)
<b>Viscosity cSt @ 100°C</b>	ASTM D445	15
<b>cSt @ 40°C</b>		118
<b>ISO Grade</b>	ASTM D445	100
<b>Viscosity index</b>	ASTM D2270	131
<b>Pour point</b>	ASTM D97	-30°F (-34°C)
<b>Biodegradability</b>	CEC-L33-T82	50% degradability in 28-35 days 60+% degradability in 56 days

## DIRECTIONS:

- Clean area to be treated.
- Using a brush, cloth or spray applicator coat all contact areas with lubricant. Apply enough lubricant to allow for wicking into tight areas.
- Re-apply as needed.

## SHELF LIFE / WARRANTY:

Super Lube® products have a five (5) year recommended shelf life when stored in the original container and in reasonable ambient conditions. The warranty period is twenty-four (24) months from the date of purchase.



*For Total Lube Solutions,*  
**GO WITH THE FLO!**

**FLO Components Ltd.,** 50 Admiral Blvd., Mississauga, ON, L5T 2W1  
1.800.668.5458 • sales@flocomponents.com • www.flocomponents.com