

Protect Your Mini-Excavator with a Small Machine Luber

INTRODUCING THE FLO SMALL MACHINE LUBER

The SM Luber is a compact yet powerful and economical automatic grease system, designed specifically for any compact machine where space for attachments is at a premium.

The SM Luber will increase overall productivity and machine availability, utilization and resale value, while lowering on-going operating costs. The system dispenses small measured amounts of lubricant at frequent intervals while your excavator is operating, maintaining a consistent lubricant seal to prevent dirt and contaminants from migrating into bearings.

With the SM Luber, you don't have to mess around with complicated grease pumps or other methods of filling the reservoir. Simply remove the lid like you would on a grease gun, insert your standard grease cartridge, replace the lid and you are ready to go.

* The SM Luber comes with all the necessary hose and fittings and includes a simple step-by-step manual so you can install it yourself and avoid the installation costs normally associated with other, more complex lubrication systems.



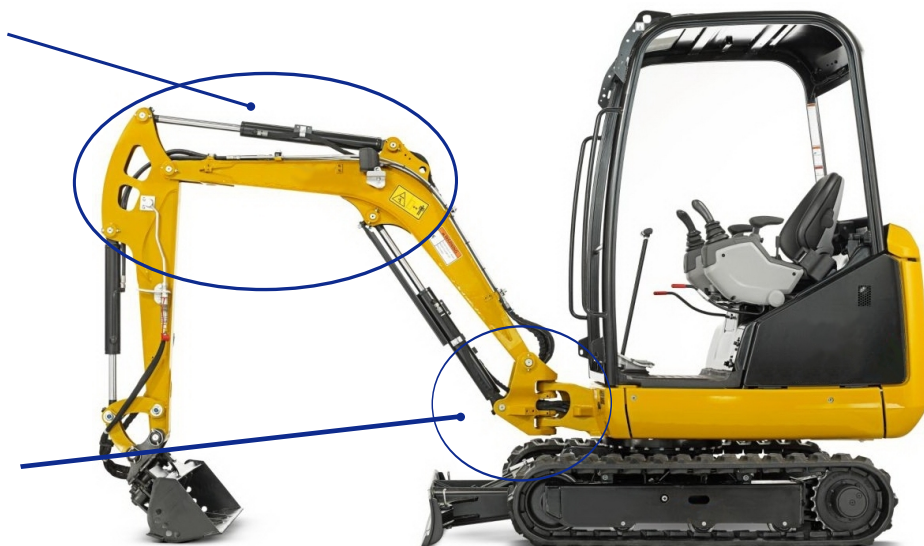
FLO SM Luber Pump System Specifications:

Operating Power, Volt Operating	12
Temperature Range	-18 to 50°C (0 to 120°F)
Lubricant (Grease)	Up to NLGI #2
Grease output at 1000 psi (69 bar)	2.6 oz./min (76.3 cm ³ /min)
Operating Current, AMP at 1,000 PSIG (69 bar)	4

RELIABLE & FULLY AUTOMATIC PROTECTION OF ALL CRITICAL WEAR POINTS

- Stick Cylinder Pins
- Stick/Boom Pivot
- Boom Cylinder Pins

- Boom Base
- Swing Cylinder Pins
- Upper/Lower Boom Swing Bearings

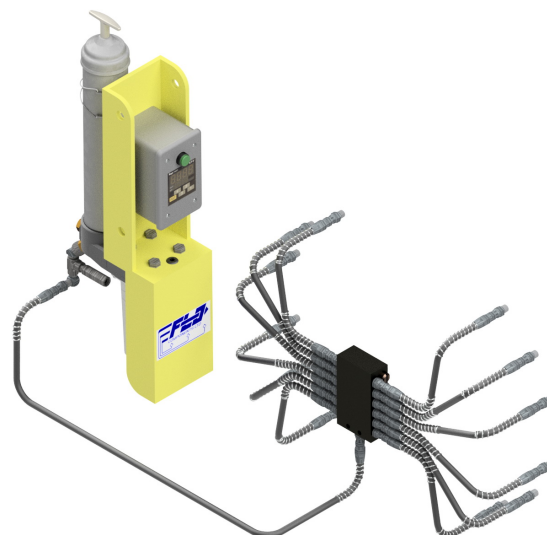


SMALL MACHINE LUBER SYSTEM LAYOUT

FLO's Small Machine Luber is a single-line progressive system. It includes a 12 VDC integrated adjustable timer, an electrically driven single outlet gear pump, a grease canister and a mounting bracket. The standard off-the-shelf model for an excavator services up to 12 grease points using a single Lincoln SSV positive displacement grease distribution valve.

The timer-controlled pump supplies grease to the distribution valve via the main line when the pump is in operation, discharging precisely measured amounts of lubricant from the metering chambers to the lubrication points. The distribution valve includes a cycle indicator pin to provide visual confirmation the system is operating correctly.

The FLO SM Luber system is suitable for most off-the-shelf industry grease cartridges currently in your shop. It will handle lubricants up to an NLGI #2 rating.



SM LUBER STANDARD KITS

Part Number	Description	Details
SM-271878	Pump Package	12VDC Electric Pump c/w Controller, Universal Mounting Bracket, Adjustable Controller and Canister for Standard 14 oz (400 gram) Grease Cartridges
SM-271878-4	Lube Kit for 3-8 Points	Includes SM-271878 Pump Package, SSV-8 Valve for up to 8 Lube Points, Fittings, Hoses etc..
SM-271878-12	Lube Kit for 3-12 Points	Includes SM-271878 Pump Package, SSV-12 Valve for up to 12 Lube Points, Fittings, Hoses etc..

Technical Data for Distribution Valve:

	Metric	Imperial
Lubricant output per outlet, per stroke	0.2 cm ³	0.0122 in ³
Max. operating pressure	350 bar	5000 psi
Min. operating pressure	20 bar	290 psi
Max. differential pressure between two outlets	100 bar	1450 psi
Outlet connection for tube diameter	4mm & 6mm	0.157" & 0.236"
Inlet connection	G 1/8	G 1/8
Operating temperature	-25°C to 70°C	-13°F to 158 F°

Distribution Valve With Cycle Indicator Pin



Suitable Lubricants

The progressive metering valve model SSV can be used for dispensing mineral oils of at least 40 mm²/s (cST) or greases up to the penetration class NLGI 2. It must nevertheless be ensured that the oils or greases used do not alter their consistency significantly over the course of time or under the influence of temperature or pressure.

For Total Lube Solutions,
GO WITH THE FLO!

FLO Components Ltd., 50 Admiral Blvd., Mississauga, ON, L5T 2W1
1.800.668.5458 • sales@flocomponents.com • www.flocomponents.com • Winnipeg: 204.832.3040